



LNYDP
LONDON'S NEW
YEAR'S DAY PARADE

 **YOUTH
MUSIC**
OF THE WORLD



Performance Travel Ltd



London's New Year's Day Parade & Festival

INFORMATION



A MESSAGE FROM ROBERT BONE



London's New Year's Day Parade and Festival – LNYDP can justifiably claim to be one of the greatest events in what is certainly one of the greatest cities in the world. Since the inaugural event in 1987 LNYDP has focused the attention of the world on the magnificent city of London each New Year's Day.



The route of London's New Year's Day Parade is the famed ceremonial route which passes along the great thoroughfares of Piccadilly, Regent Street and Whitehall, passing by Piccadilly Circus and Trafalgar Square on its two mile path through the centre of the historic city of Westminster, ending in Parliament Street in the shadow of the Houses of Parliament and Big Ben. The Parade is viewed by a live television audience of around 280 million people worldwide, whilst more than half a million spectators pack London's streets to catch a glimpse of the spectacular procession.

The Festival's Gala concert Series is the most significant annual Festival of youth music in London featuring a host of splendid concerts in glittering and prestigious venues throughout central London. Venues include St. John's Smith Square, Southwark Cathedral, the Cathedral Church of St. Augustine's, and the fabulous Cadogan Hall, home of the Royal Philharmonic Orchestra.

Patrons and Supporters of the Parade include Her Majesty's Lord Lieutenant for Greater London, the Prime Minister, the Bishop of London, the Archbishop of Westminster and the British Minister for Culture, Media and Sport. Over the years the Ambassadors of the United States of America have been ardent supporters and have often attended the event along with the ambassadors of many other countries from around the world. The host of the Parade is the Lord Mayor of the City of Westminster, who leads the Mayors of all of London's Boroughs in the procession.

We are very pleased to be able to heartily endorse the programme presented to you by Youth Music of The World, the world's finest

performance travel organizer. Youth Music of the World works closely with us, the Parade organisers, and with the event's patrons to produce a unique and exclusive programme for participating musicians and performers from around the world. The quality and educational value of the programme is second to none.



ABOUT US

London's New Year's Day Parade and Festival works in an exclusive agency agreement with the Youth Music of the World organisation for the creation and provision of the Performance tour arrangements for groups appearing in the Parade and Festival. Youth Music employs a team of dedicated professionals to represent the event throughout the world.



Geraldine Bone



F Powell Johann



William Northen



Jonathan Whaley



Dr Paula Crider



Tim Lautzenheiser



Gary Locke



Theresa Davis



Malcolm Chalk



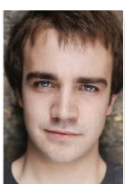
Lizzie Bone



Nick Kidd



Dan Kirkby



Jack Ayers



Joe Bone



Dean Oblonsky

Youth Music's Directors International Participation are Mr. F Powell Johann, Mr. William Northen, and Mr. Jonathan Whaley. They are ably supported by a team of consultants and advisors including Dr. Paula Crider, Dr. Tim Lautzenheiser, Mr. D. Stanley Barnes, Mr. Gary Locke, Mr. Guy Wood and Mr. W.L. Whaley.

In London Youth Music is exclusively represented by Destination Events Limited, the owners of LNYDP. London headquarters are overseen by the event's Executive Director Robert Bone, and Director Geraldine Bone. Theresa Davis has the role of Director of administration whilst the key departments of Operations and Production are controlled by Malcolm Chalk and Nick Kidd respectively. The all important role of Director of communications is fulfilled by Dan Kirkby who is ably assisted by Jack Ayers who specialises in social media. Lizzie Bone is Director of Publications and Mayoral relations for LNYDP and also manages the tour assistant Staff for all of the DEL stable of events in Europe, aided for LNYDP by Dean Oblonsky. Joe Bone masterminds logistics and merchandise for LNYDP.

Youth Music of the World is not a travel company, and no travel company can offer you participation in London's New Year's Day Parade and Festival. Participation in the event is strictly by invitation from the patrons and organisers.

The performance travel programme presented by Youth Music of the World has been prepared and refined over a number of years by experienced staff. They provide participants with a unique, culturally enriching, educational, and hugely enjoyable experience. Everything

that Youth Music does is designed to make the programme easily accessible to group leaders by removing much of the administrative and organisational burden, thus allowing group leaders the opportunity to devote their efforts to the internal management and performance of their group.

FESTIVAL EVENTS

Groups from overseas taking part in the Festival will be contracted to perform at either the New Year's Day Parade or in one of the Festival's Gala concerts.



If groups who perform in the Parade wish to perform with a suitable musical ensemble at one of the Gala concerts in addition to their Parade appearance, then, by negotiation, such a performance opportunity can be offered. If groups who are contracted to perform at a Gala concert wish to present a second performance either with the same ensemble or a different ensemble at another concert in the Festival series, then this too can be negotiated. Our concert venues are not suitable for marching band performances but if marching bands with colour Guards wish to present a second performance, we have opportunities in our promotional lunchtime concerts in outdoor venues such as Trafalgar Square.

Those groups appearing in one of the Gala concerts and other presentations that are part of the Festival will be performing in one of a number of iconic venues that stage the Festival's events. Venues will be chosen to best suit the needs of each performing group. A professional production team will work with each group to maximise the quality of the performance and the enjoyment derived from the performance by the individual performers. On the day of the performance each group will be provided with time for a 'technical rehearsal' in the concert venue in which they later perform.

Each group will share a concert with other performing groups and each individual group will receive approximately 20 minutes of playing time. Concerts are normally played to full houses

and some of the Galas are played to audiences of invited guests including event Patrons and London's Mayors. All concert performances are reviewed by an international panel of adjudicators but no concerts are competitive. All groups performing in our concerts receive transportation to and from their hotels for both rehearsal and performance. Every group member who is not a performer in the concert group will receive a complimentary ticket to the concert at which their group performs.

Venues regularly used for the Gala concerts include Cadogan Hall, home of the royal Philharmonic orchestra. St. John's Smith Square, St. Mary's Bourne Street, St. Augustine's Kilburn, St Andrew's Fulham Fields, Westminster Central Hall and Westminster Cathedral.

Those groups performing in the world's greatest Parade – London's New Year's Day Parade, will begin the parade route on the grand thoroughfare of Piccadilly directly opposite the Ritz Hotel. The Parade route passes down Piccadilly, past the Royal Academy with banks of specially erected grandstands, to Piccadilly Circus known throughout the world for its statue of Eros and as the centre of London's theatre district. From Piccadilly Circus the route leads along Regent Street, Pall Mall, and Cockspur Street, before entering Trafalgar Square with its famous Nelson's column, the National Gallery, and St. Martin-in-the-Fields – the Queen's Parish church. From Trafalgar Square the route moves

to Whitehall, lined with Britain's great Ministries of State, the Cenotaph and Downing Street, the official residence of the British Prime minister, to Parliament Square. Here in the shadow of the Houses of Parliament, Big Ben and Westminster abbey, in a specially created arena in front of grandstands for dignitaries and VIPs, all performers present a final performance both for the VIPs and television cameras.



SERVICE

Our service is very special. The performance travel programme in London offered and provided by Youth Music of the World, through its agent Destination Events, is carefully monitored and checked by the Festival Patrons and Supporters.



Destination Events has been granted the right to be the exclusive organizer of the programme because they fulfil stringent requirements. London's New Year's Day Parade and Festival is an official event of the City of Westminster and the London Mayors' Association and is one of London's annual showcases to the world. As such the programme offered must be of the highest quality.

Our team is comprised of the very best in the field. Attention to detail is our mantra. We provide a service that is second to none. In the summer before the event we provide a Site Inspection tour for all group leaders. Every facet of the performance tour programme is discussed and demonstrated. We produce a customized and comprehensive group organiser's guide for each group. The guide provides step by step instruction

towards programme participation. We have pioneered the concept of each of our performing groups having a dedicated member of our team stay with them and 'live' each programme with their group as a permanent, ever present, resource. We do not believe that our quality of care is matched by any other organisation.

AIRLINES

Youth Music uses only the world's best airlines, each a major scheduled carrier, and each operating to the highest safety criteria in the aviation industry.



For travelling American groups we use a mixture of British and American airlines. The British carriers used are Virgin Atlantic Airways and British Airways. The American carriers used include United Airlines, Delta Airlines and American Airlines.

All passengers will travel in coach class. On International trans-atlantic flights this always includes at least one main meal, and one snack meal in each direction, complimentary soft drinks, and a full range of in-flight entertainment including movies, TV programmes, and audio channels. On some airlines it is necessary to pay a small amount for a headset.

The main criteria in our selection of airlines is safety, security, on time performance, back up provision in case of problems, and a proven ability

to fulfil the travelling needs of musical performance groups.

Our airlines contracts are carefully managed and overseen by fully licensed and bonded partner, Performance travel Limited, which is based in Richmond, Virginia.

It is not compulsory to secure air travel arrangements through Youth Music/ Performance Travel. However, most groups find it advantageous to do. If air travel is not provided by Youth Music Performance Travel then approval for the independently arranged travel must be secured from Youth Music. This is to ensure that the alternate provider is sound financially and reliable operationally, and that the Youth Music Programme will not be compromised in any way by the selected independent supplier.



INSTRUMENT AND EQUIPMENT TRANSPORTATION

One of the unique and very beneficial features of Youth Music's Performance tours is the way in which we handle band equipment, and large instrumentation.



We will have an international Freight Forwarding company collect from your school/ university/group headquarters all of the band equipment and large instrumentation that you need to ship to London for your Performances in the LNYDP Festival. Your large instruments and equipment will be delivered up to your London hotel by event staff. The reverse process will happen on the return journey. We will collect large instrumentation and equipment from your hotel in London, and return it directly to your school or other specified address in the United States.

What can be included in the consignment?

We include in the consignment all instruments larger than a trumpet in a standard case, and all equipment including uniforms and hats/shakos.

What happens to items that we cannot include in the consignment?

We strongly recommend that students take such items in their suitcase/major item of luggage. They have a free checked baggage allowance of one item that may weigh up 50lbs. this is a big piece of luggage for a week in London. Instruments up to and including trumpets in their cases should either be packed into the piece of checked luggage or carried on board within the carry on allowance. If a trumpet is carried on, then it is counts as the piece of carry on luggage, and only a further purse or laptop case is allowed.

Can I include things that are not normally in the consignment?

We will be happy to give you a quotation that includes uniforms, trumpets and anything else

not normally included in the consignment. You will find the rates for any additional items are very beneficial, but we must stress that it is not necessary to move outside of our successful and proven system.

What about really big equipment like timpanis?

We include sousaphones, and concert tubas within your consignment because we are not able to rent those in the numbers that might be required in London. However, we provide within our programme, at no additional charge to you, a certain amount of concert instrumentation in your London venue. In other words things like timpanis, string basses, etc are always provided for you in London without any additional charge. You simply do not have to worry about them.

There is very little doubt that the inclusion of this service in the LNYDP Performance tour programme is a huge enhancement to the service, and of incalculable benefit to the group organiser.

Obviously, there are a few things that the group organiser has to do himself to make this largely effortless process successful. Accurate and timely completion of an equipment manifest is a requirement, as is the timely acquisition of a goods carnet (passport for the equipment and instruments). However, we will lead you through this process very carefully, and make it as painless as possible.

We hope you agree that this particular feature in the LNYDP Performance tour is hugely significant, important, and beneficial to the group organiser.

HOTELS

The selection of accommodations is crucially important to the success of the Performance tour programme. All of our hotels are carefully selected and rigorously checked at least twice a year, to ensure that they meet the standards and requirements of our performance groups.



Each of these hotels is in the Superior First class category. All of the hotels that we use have standards higher than the normal levels provided to student groups. In our hotels, students are generally accommodated two to a room, although in hotels where the rooms are larger we will offer rooms for three people. We never offer rooms for any more than four people. All accompanying staff members, chaperones, parents and supporters, are accommodated two per room. In some hotels we have a number of family rooms available that can sleep up to four people.

All bedrooms in our Superior First class hotels have the sort of facilities that you would expect including en suite bathrooms, television, radio, direct dial telephone, hair dryer, and much, much more.

The standard of decor is high. The standard of hotel services including restaurants, bars and banqueting is equally high. We ensure that every hotel that we use has sufficient banqueting space for the group meals that are included in the programme, for rehearsal space should rehearsal be required, for full group meetings, for orientation meetings and other purposes. We also ensure that each hotel provides lockable facilities for the storage of instruments and equipment, and each hotel has a specially designated full time hotel staff member to satisfy the needs of Youth Music clients.

The hotels that we will use over the New Year period for marching bands, concert bands, orchestras and other musical performing ensemble from America are as follows:

From the Hilton Group

www.hilton.co.uk/
Hilton London Metropole
Hilton Kensington
Hilton Olympia
The Doubletree Westminster

From Park Plaza Hotels

www.parkplaza.com
Park Plaza Westminster Bridge
Park Plaza Riverbank
Park Plaza Victoria

From The Thistle Hotel Group

www.thistle.com
Thistle Marble Arch
Thistle Euston

From the Guoman Hotel Group

www.guoman.com
The Tower
The Cumberland
The Charing Cross

From the Doubletree Hotel Group

www.doubletree3.hilton.com
The Doubletree Westminster

From the Holiday Inn Group

www.ihg.com
Holiday Inn Kensington

MEALS



Breakfast is provided every day in the group's hotel. It is offered in a buffet style and includes the following items: a selection of fresh fruit juices; a selection of cereals, pastries and breads such as croissant, pain au raisin, pain au chocolat, brioche, bread rolls, baguette, and bread for toasting. Butter, low fat spread, and an assortment of preserves – jams (jellies), and marmalades. There will be a selection of fresh and preserved fruit, as well as yogurts of various types. In addition, a selection of cheeses and hams will be available to complete an enhanced and substantial continental breakfast. Hot beverages of tea, coffee, and hot chocolate will be available, as will hot and cold milk. Bakery items are varied on a regular basis.

The programme includes three dinners to be taken in the hotel, one of which we recommend should always be taken on the day of arrival in London. The meals in the hotel will generally be served buffet style and will consist of two courses, an entrée and a dessert, with a salad available as a side dish. A considerable range of menu choice will be given to allow group leaders to select the most suitable menus for their groups.

For the other three dinners during the programme we offer:

Food vouchers, which can be used at a vast range of restaurants in London, offering each student the opportunity to have exactly what they would like from the large amount of choice available, rather than being limited by 'set' menus. We guarantee that there will be a considerable number of restaurants that take the vouchers within a few minutes walk of your hotel, and the hotels themselves also take the vouchers. In addition our staff are happy to give guidance as to restaurants that would be most suitable and accept the vouchers.

Other options can also be made available for one of your dinners. Perhaps you may like to sample a traditional British pub meal of fish and chips or bangers and mash, followed up by sticky toffee pudding or apple crumble and custard. Alternatively the ethnic diversity of London means that we have an excellent range of Indian, Thai, Vietnamese and Chinese restaurants if you are feeling adventurous. With the Indian dish chicken tikka masala now being our most popular national dish it is well worth a try!



ITINERARY

Over many years we have developed a week long programme that gives a near perfect balance of performance and rehearsal time, educational sightseeing and unstructured time in which to plan educational and cultural visits of specific personal interest and some pure fun time.



All of our itineraries are individually constructed by Destination Events Operations Director after consultation with each group leader to ensure that every group has exactly the itinerary that fulfils all of their specific needs and aspirations. A sample itinerary from a performance tour programme created for one of our previous groups will be found immediately after this general information.

On the following pages we describe each of the structured components in our programme, but first a word about our motor coaches and guides.

Whenever motor coach transportation is included in our programme it is provided on luxury motor coaches, fully certified to the highest levels of industry safety and security and with experienced, safe and qualified drivers. Our motor coach providers have to submit proof of insurance cover to the equivalent of sixteen million dollars. Modern British motor coaches have large panoramic windows, state of the art sound systems, passenger seat belts and have effective heating and

ventilation. All motor coaches provide a smoke free environment. From July 1st 2007 smoking has been illegal in the workplace in England and is also banned in all restaurants, bars and places of public gathering.

Our guides are all fully qualified members of the Guild of Guide Lecturers and proudly display their qualification by wearing the famous 'Blue Badge'. We have carefully selected all of the guides that we use from this elite Guild. We choose guides who are able to provide stimulating and interesting commentary and who can relate well to young people.

TOURS

The following tours are included in the programme. In each case you will be taken on the tour by motor coach and have the services of a professional Blue Badge Guide.

- a half day tour of London
- a full day tour to the Tower of London and Greenwich
- a full day tour to Windsor and either Oxford or Hampton Court

The **London tour** takes you around London's historic West End and the City passing many famous and historic landmarks and well known areas including St. Paul's Cathedral, Westminster abbey, Buckingham Palace, the Houses of Parliament, the London Eye, Trafalgar Square, Piccadilly Circus, theatre land, Soho, Oxford Street and much more. Although there are no guided interior visits, the guide will arrange stops at the most popular locations for photographs. The tour serves to give historical perspective, to orientate and to whet the appetite for further personal exploration later in the week.

The Tower of London is considered to be the foremost 'must do' activity in London. Despite its primary role as a fortress, a Royal Palace and a prison, particularly for high status and royal prisoners, such as the Princes in the Tower and the future Queen Elizabeth I, it has also served as a place of execution and torture, an armoury, a treasury, a zoo, the royal mint, a public records office, an observatory, and since 1303, the home of the Crown Jewels. You will be taken on a guided tour around all of the Tower including a visit to the Crown Jewels. Don't forget to have your photo taken with one of the Beefeaters at the Tower!



Greenwich and the 2012 Olympic Village. On the 3rd February 2012 Greenwich became the Royal Borough of Greenwich. Its new status was made official with a royal charter signed by the Queen, in recognition of the close links between Greenwich and royalty since the middle ages. Greenwich is a UNESCO World Heritage Site and home of Greenwich Mean Time and the Meridian Line. Other famous landmarks include the National Maritime Museum, the Royal Observatory, and Sir Christopher Wren's old Royal Naval College and the Cutty Sark.

Greenwich was also the home of the Olympic Village for the 2012 London Olympic Games. This tour to Greenwich and the 2012 Olympic Park includes a Thames river cruise from the Tower of London to Greenwich, and entrances to the Royal Observatory including the 'Prime Meridian' and the Maritime Museum.

Windsor is located in the Royal Borough of Windsor and Maidenhead, approximately 20 miles outside of London, with the river Thames running through the heart of the town. The historic town is home to the world famous Windsor Castle. The castle is almost 1000 years old and since the time of William the Conqueror has served as the residence and fortress for the British monarch. As home to the British Royal Family the castle brings with it all the pomp and ceremony of the Royal Household. The regular changing of the guard ceremony, state visits of foreign dignitaries and even the occasional Royal

Wedding. The visit to Windsor includes a guided tour of the castle and the royal apartments and a walk through the cobbled streets and shops of the market town.

Oxford is the county town of Oxfordshire. The city is renowned worldwide as a university town and home of the University of Oxford, the oldest university in the country and even in the English-speaking world. The architecture of the city demonstrates examples of every period since the Saxons, and Oxford is also known as the city of Dreaming Spires referring to the architecture of the University College buildings. Your visit to Oxford will involve a guided tour around the town and include entrance to one of the famous University colleges.

Hampton Court Palace is a Royal Palace in the London Borough of Richmond upon Thames, in the historic county of Middlesex. The Palace is most famously known as having been the residence of King Henry VIII. Highlights of the Palace include the Great Hall, the kitchens, the Chapel Royal and the 'Real (Royal) Tennis Courts'. Your visit to Hampton Court will include entrance and a full tour of the interior of the Palace as well as entrance to the gardens and the famous maze.



A LEADERSHIP SEMINAR WITH DR. TIM LAUTZENHEISER



LNYDP is very proud to count Dr. Tim Lautzenheiser of 'Attitude Concepts for Today' as one of its supporters and advisors.

Uniquely for LNYDP Dr. Tim offers one of his highly acclaimed leadership seminars during in the LNYDP Performance tour programme. This seminar will be included in your itinerary.

Distinguished Lecturer), Indiana-Purdue/Ft. Wayne University, and Butler University. In addition, he serves on the Midwest Clinic Board of Directors and the Western International Band Clinic/ American Band college Board of Directors.

In 1981, Tim created 'Attitude Concepts for Today, Inc.', an organization designed to manage the many requests for workshops, seminars, and convention speaking engagements focusing on the area of positive attitude and effective leadership training. Over two million students have experienced his acclaimed student leadership workshops over the last three decades.



About Dr. Tim Lautzenheiser

Tim Lautzenheiser's career involves ten years of successful college band directing at Northern Michigan University, the University of Missouri, and New Mexico State University. He presently serves as Vice President of Education for Conn-Selmer, Inc. In addition, he continues his rigorous travel schedule presenting the importance of arts education for every child.

His books, produced by G.I.A. Publications, Inc., continue to be bestsellers in the educational world. He is also co-author of popular band method, Essential Elements, and is the Senior Educational consultant for Hal Leonard, Inc. Tim is the Senior Educational advisor for Music for All, and Namm (the International music Products association). Tim holds degrees from Ball State University and the University of Alabama; in 1995 he was awarded an Honorary Doctorate from the Vandercook College of Music. He is presently an adjunct faculty member at: Ball State University (Earl Dunn



EDUCATIONAL GUIDED AUDIO WALKS

The best of London can be seen on foot. In light of this we have partnered with the market leader in audio guided walking tours, Audiotraveler Ltd, to exclusively create special tours for participants on Youth Music programmes in London. Only participants on our programmes have access to the fantastic tours which are updated and made even better each year.

Each of the walks has been carefully prepared by a knowledgeable team of historians and qualified London guides whose material has then been developed by professional script writers and finally performed by the acclaimed radio actor Tyler Butterworth. Each of the walks has a duration in total of approximately two hours from start to finish, and the walks are delivered on a specially branded



'London's New Year's Day Parade' MP3 Player complete with headphones and USB charger, as well as a booklet containing all the instructions that you need to complete the walks successfully. Every participant gets to take home their MP3 player as a souvenir and superb educational resource.

Walk 3 Starting in glittering Covent Garden, we take in the world's most haunted theatres and talk to the stars as we explore the very heart of London's world famous theatre- land and much, much more.

Every group member will receive an MP3 player loaded with a total of eight walks, five educational and three specialties. The 'Parade route' walk and two other educational walks selected by the group leader will be set into the itinerary. The remaining two educational walks will be optional.

Walk 4, our specially commissioned interactive audio treasure trail. All you need is a pen, and the map sheet (provided) to unravel the secret trail and find the hidden clues.

Walk 5 this walk celebrates over 250 remarkable years of an unbreakable transatlantic friendship. Sites include: Jimi Hendrix House, the famous Christmas Windows of Selfridges Store and the beautiful 9/11 memorial.

Walk 1 this takes you along the magnificent New Year's Day procession route. Discover where you'll be marching, what you'll be passing, who will be watching and where the crowds will be cheering from.

Walk 2, Walk shoulder to shoulder with over 1000 years of royalty. Sites include: Palace of Westminster, Prince William's London house and the changing of the Guard at Buckingham Palace.

SPECIALITY GUIDED AUDIO WALKS

Three fabulous speciality audio guided walking tours are featured.

Two of the three speciality walks will be set into the itinerary, with the remaining walk being optional.

- **Murder, Mystery and Mayhem in Old London** – Jack the Ripper and other spooky stories of London.
- **London, Rock and Roll Capital of the World** – The Beatles, The Rolling Stones, The Swinging Sixties, Glam Rock, Punk Rock, Brit Pop and more.
- **Harry Potter's London** – The London sights and sounds of the world's most famous fictional boy Wizard! *

* If Harry Potter is not your cup of tea we do have one alternative walk that we can offer to your group:

London and the Magic of the Silver Screen – discover where in London many scenes of some of your favourite movies and TV shows were filmed.



OYSTER CARDS

By far and away the best way to see London and travel around the capital is on foot aided by London's superb public transport network of tube (underground) trains and buses operated by Transport for London (TfL).



To help you get around London and get the most out of London all programme participants are provided with their own 'Oyster Card'. These can be used all over London on tube trains, buses and some overground trains. TfL with your Oyster card can take you anywhere you would like to go in London, from the shops in Knightsbridge, Oxford and Regents Streets, to the cafés and street performers in Covent Garden to the museums in South Kensington, or to get you to and from the start and finish points of your fabulous audio walks.

Oyster cards offer cost effective travel around London enabling the city to be travelled around freely and easily. Every programme participant will be provided with an oyster card for the duration of their programme in London thus making London's buses, trams, tube, Dockland Light Railway, London Overground, (some) National Rail and (some) boats available to them.

The Oyster card is an electronic smartcard ticket. It will have a starter value for a number of central zone journeys put on it for your programme, but can be 'topped up' (money added to the oyster card) at any time using the self service machines at stations with cash, credit or debit cards for additional journeys you may wish to take. The Oyster card is easy to use. Simply touch your card on the yellow reader on the ticket barrier at the start of your journey and then again on the yellow reader on the ticket barrier at the end of your journey. The Oyster

cleverly calculates the cheapest fare for all your journeys so you'll never pay more per day than the price of a day travel card overall!



NEW YEAR'S EVE

To celebrate the seeing in of the New Year, Destination Events will arrange for your group to attend a special New Year's Eve celebration in your hotel or in a hotel close by with other groups taking part in the programme.



New Year's Eve parties have always been successful and enjoyed by the many young performers in the Parade and Festival. The parties generally start around 9.00pm and last until half an hour into the New Year giving you just enough time to do the countdown to the New Year and sing Auld Lang Syne before heading off to bed to get enough sleep to give fabulous performances in the Parade the following day.

A professional disco with a light show will be set up for the party with a DJ playing a mix of new and classic music. Students will have the chance to request songs and even play tracks from their own iPod if they wish. Party

favours, of hats, party poppers, balloons, and more will also be provided.

Complimentary pizza and a soft drink will be served. Additional soft drinks will be available throughout the evening from a cash bar that the hotel will have set up for the party's duration. Transport, where necessary, will also be included.

NEW YEAR'S DAY



For Performers

Each participant in a group will receive from London's New Year's Day Parade organisers:

- a pre-packed lunch with bloomer sandwich, coleslaw, 33ml water, apple, brownie and chips;
- a specially struck London's New Year's Day Parade medal;
- a 10"x8" print of the Group Photograph that is taken on January 1st with the backdrop of the Houses of Parliament and Big Ben. The photograph is presented to each member of the performing group in a souvenir card mount.

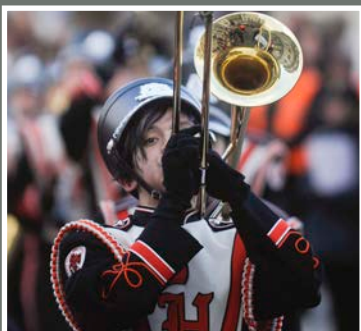
For Non-Performers

All supporters, parents, chaperones and band boosters in a group will receive from London's New Year's Day Parade organisers:

- a ticket for a seat in the highly coveted LNYDP Grandstands to watch the Parade on January 1st.

IMPORTANT NOTES

This information tells you about London's New Year's Day Parade and Festival, and the programme offered by Youth Music for the World through an exclusive agreement with the event's organizers Destination Events Limited that enables North American groups to participate in the event.



If you are selected for possible invitation by the Steering committee of patrons and organisers you will be contacted by one of Youth Music team of senior representatives and consultants who will be able to answer any questions you may have about the event and the performance tour. The first official correspondence you will receive will be from the organisers in London in the form of a letter telling you that you have been recommended for participation and asking if you would be able to accept an invitation to participate should one be offered.

If you want to move forward from this stage you will then work with Youth Music Senior representatives and consultants to decide on the criteria of a performance tour offer that will be made to you. Decisions will need to be made on the following:

- number of places available
- dates of travel and departure airport
- exact performance programme features
- costs and payment schedules

Once you have agreed the above information you will be asked to complete a confirmation of approvals form. This form

confirms that there is no known impediment to your acceptance of an invitation – i.e. that permissions from Principals, Superintendents, School Boards, Band Boosters, and Parents have been granted. You will then need to return the completed form, along with details of the agreed performance travel programme offer, to your Youth music representative or consultant. Once we receive the above items from your representative or consultant, we will create and send to you a formal contract based upon the agreed parameters. At the same time we will arrange with you the details of a visit that will be made to you by one of our event dignitaries and patrons who will present you with the official and formal invitation for your participation in the event. Your contract must be signed by the time the visit is made.

We reserve the right to vary this information at any time. We are always seeking to improve our offers and our performance and to ensure that our programmes are the very best available to performance groups of young people from all over the world.



Destination Events
1 Turnham Green Terrace Mews
Chiswick, London W4 1QU
Tel: +44 (0)20 3275 0190

e-mail: info@lnydp.com
www.lnydp.com



[www.twitter.com/lnydp](https://twitter.com/lnydp)
www.facebook.com/lnydp



Performance Travel Ltd