

LNYDP INFORMATION



LNYDP
LONDON'S NEW
YEAR'S DAY PARADE
★ AND FESTIVAL ★



**All the information you need
for taking part in LNYDP,
London's New Year's Day Parade
and Festival**

LNYDP

LONDON'S NEW YEAR'S DAY PARADE & FESTIVAL

'The Greatest Parade in the Greatest City in the World'

- London's most important New Year event – now in it's 32nd year
- More than 8,000 performers from 20 countries around the world
- 650,000 spectators on the historic and spectacular Parade route
- 350,000,000 TV viewers worldwide.
- Week long concert series performed to packed houses in London's finest Music Venues

Bob Bone, the event's founder and Executive Director tells you more.



DESTINATION EVENTS: ABOUT US



The founder, organiser, and owner of London's New Year's Day Parade is one of Europe's foremost event organisers – Destination Events Ltd.

Destination Events boasts a supremely accomplished, experienced and dedicated team of staff. They are expert not only in the production of world class events but also in the delivery of superb hospitality arrangements and educational touring experiences for performers in their events.



The Destination Events team have to be good – their prime sponsors are The City of Westminster, The Lord Lieutenancy of Greater London and the London Mayors' Association. The sponsors need their city to be shown with excellence. That's what Destination Events do.

Meet key member of the Destination Events team by visiting our [Destination Events](#) website.

Destination Events has found a worthy partner in the Youth Music of the World Organisation. With a dedicated team of experts and consultants Youth Music sources for Destination Events groups who are worthy to be considered for invitation to LNYDP.



Once a group has been accepted for invitation by Destination Events and the Parade's Patrons and sponsors Youth Music then develops an unique performance tour to make it possible for the group to participate in London's New Year's Day Parade and Festival.

Meet key members of the Youth Music team by visiting our [Youth Music](#) website.



LNYDP: THE PARADE



The Parade on January 1st is the central point of the week long Festival. Two thirds of a million people throng the historic streets of Westminster – the heart of London, from 12.00 midday until 3.30 pm to view the spectacle as it makes its way past:

- The Ritz Hotel – Piccadilly
- Piccadilly Circus – heart of the West End Theatre
- Trafalgar Square – Nelson's Column, National Gallery
- Whitehall, Horseguards Parade, Banqueting House, Downing Street
- To the TV Finale performance arena and then on to Parliament Square with the Houses of Parliament, Big Ben, and Westminster Abbey.

Find out more about the [Parade](#).



LNYDP: THE GALA CONCERT SERIES



The Gala Concert Series features spectacular performances in some of London's finest music venues.

Within most marching bands there exist other ensembles whose talents can best be shown in a concert hall setting. So here is that extra opportunity for Marching Band players to show their concert performance skills

Orchestras are also very welcome, in fact encouraged – including strings – to participate in the Gala Concert Series. You are welcome at this festival whether you march or not – we can always find something for all Festival performers to do in the Parade if they want – handle a giant balloon, ride a 'Boris Bike' become a costumed character!

Our superb venues include:

- [Cadogan Hall](#)
- [St John's Smith Square](#)
- [Southwark Cathedral](#)



LNYP: INTERNATIONAL CHORAL FESTIVAL



[The London International Choral Festival](#) runs in association with LNYP throughout the new year's week. Yes choirs are welcome too and enjoy a very special programme, including opportunities to sing in Gala Concert Series Venues as individual choirs and then in the Grand Finale of the Festival week. All choirs come together to form a massed choir accompanied by the magnificent Young Musician's Symphony Orchestra and perform in a phenomenal concert in the fabulous venue of [Westminster Central Hall](#).

Transport for all Parade performers is included from your hotel to Parade Assembly and from Parade dispersal to hotel.

A technical rehearsal is provided for all concert performers in their venue. Transport is provided from your hotel to and from the rehearsal and the performance.

GETTING YOU TO LONDON

Youth Music's staff and consultants at Performance Travel (PTL) are experts in arranging air travel from the USA to London for groups invited to perform in LNYDP.

It is a complicated business arranging air travel for what are often very large groups. PTL work tirelessly to secure the best blocks of seats with the best airlines and the most convenient schedules for performing groups.

Preferred carriers are British Airways, American Airlines, Delta Airlines, Virgin Atlantic, and United.

Flights to London are always 'overnight' and range in length from just 6 hours if you are travelling from Boston to 11 hours if you are coming from southern California. We always try to book you on direct non stop services but of course not all cities in the USA have non stops to London. We do though always try to take you from your nearest major airport and get you to London with no more than one connection wherever you are coming from.

London is on GMT (Greenwich Mean Time) over the new year period. GMT is 5 hours ahead of Eastern time, 6 ahead of Central, 7 hours in front of Mountain time and a whopping 8 hours ahead of Pacific Standard time. This means if you leave the East Coast in the early evening you get in to London early in the morning on the following day. Flying from the west coast if you depart late afternoon it is close to lunchtime the next day when you land in London.

The service on all airlines in coach (economy) is much the same. You get a free main meal and free drinks soon after take off, and maybe a small snack meal before landing. All flights booked by PTL allow you one item of checked luggage. (We deal with the transportation of instruments and musical equipment in a very special and super convenient way). You get a 'carry on' as well – the sizes and weights allowed vary airline to airline. All airlines booked by PTL offer a good range of in flight entertainment.

Check out our airlines:

[British Airways](#)

[American Airlines](#)

[Delta Air Lines](#)

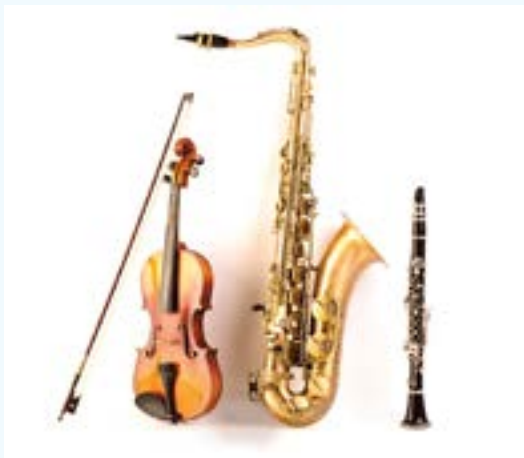
[Virgin Atlantic](#)

[United Airlines](#)



*Using the services of PTL to book your flights is not obligatory but is recommended

GETTING YOUR INSTRUMENTS AND EQUIPMENT TO LONDON



One of the most beneficial and appreciated elements included in the Destination Events portfolio and provided as part of the Youth Music programme to LNYDP, is the hassle free way that musical instruments and equipment is transported to London and back again to the USA.

- All instruments*, uniforms and essential equipment** are collected from your home base in the USA – school, college, University, or rehearsal centre – and air freighted to London.
- Everything is delivered to your hotel in London just before you arrive and is placed in a secure storage facility exclusive to your group in your hotel.
- When all performances are complete your consignment will be collected from your hotel and air freighted back to the USA and then delivered to your home base in the USA a few days after your return from London.

What do you have to do?

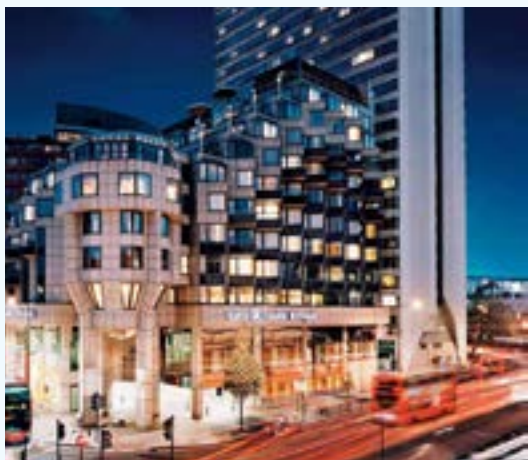
- Create a manifest to our template
- Box and label all of your consignment
- Secure a 'carnet' – passport for goods

It's so easy – let our Logistics Director, Joe Bone, tell you how.

* We recommend that smaller instruments – piccolos, flutes and even clarinets are either taken by individual performers in their checked luggage or consolidated in to larger boxes of multiple instruments for inclusion in the freight consignment.

** For concert performers we provide free of charge timpani, a number of pit instruments, string basses etc. without charge, and so these things do not need to be transhipped.

ACCOMMODATION



It is really important to LNYDP organisers that every performer in the event has a great place to stay.

The hotels used are very carefully selected and regularly checked by LNYDP staff to ensure that their standards are maintained.

All hotels used are categorised as superior first class. Standards of decor, furnishing and housekeeping are always high.

- Most participants accommodated 2 per room (2 beds or 1 Queen or King bed). Some hotels offer studio type rooms that can accommodate up to 4 people. Most hotels can offer limited numbers of three bedded rooms.
- All bedrooms have private bathrooms (some with tubs and showers and some with walk in showers only).
- All rooms have flatscreen TV's, (almost always flatscreens), direct dial phones, and hair dryers.
- All hotels offer complimentary wifi.
- All rooms have mini fridges (minibars destocked).
- All hotels offer irons and ironing boards – mostly in every room.
- All hotels offer meeting room facilities to our groups and most offer rehearsal facilities.
- All hotels provide locked and secure rooms for the storage of musical instruments and equipment.

Take a look at our current hotel portfolio:

[Hilton London Metropole](#)

[Hilton Kensington](#)

[Hilton Olympia](#)

[Park Plaza Westminster Bridge](#)

[Park Plaza Waterloo](#)

[Park Plaza Victoria](#)

[Park Plaza Riverbank](#)

[The Holiday Inn Kensington High Street](#)

[The Holiday Inn Kensington Forum](#)

[Intercontinental Hotel O2](#)



MEALS



This page should be decorated with pics of restaurants and food buffets and food dishes

The LNYDP programme makes sure that participants don't go hungry.

Breakfast is included every day*. A special buffet breakfast is offered to all groups in their hotel. Juices, fresh fruit, yogurts, bread and pastries, ham and cold meats, cheeses, plus always at least two hot items – eggs, and either bacon, or sausage or ham etc. Hot drinks will include coffee, hot chocolate and hot teas.

Dinner is included every day. For some days this is a prearranged buffet or plated meal served in a banqueting room at the hotel. On other days we provide a special dine around option where the card or vouchers we provide are usable at over 4,000 restaurants throughout London. With London now widely acknowledged as the culinary capital of the world, with more ethnic dining opportunities available than in any other City, the 'Edenred LV' dining system is perfect for LNYDP participants.

A much appreciated addition to the food offering is a special sack lunch provided offered in the Parade Assembly area for all who take part in the Parade on New Year's Day. This lunch consists of a gourmet sandwich, a dessert, 'Babybel' cheese, fresh fruit and bottled water.

The only meal we don't provide is lunch but smart participants calculate that they can use part of their generous 'LV' dine around allowance on the days they are using the scheme to secure a sandwich lunch – on other days a good 'fast food' lunch can be purchased for around £ 4.00 - £ 5.50 (\$ 5.50- \$7.00).

* Breakfast is not included in the hotel on the day of arrival. There will have been an offering of a very light breakfast or snack on the plane before it lands. Breakfast is included at the hotel on the day of departure.

SEEING LONDON AND ENGLAND



It is very important to us and to our Patrons, Sponsors and Supporters that all LNYDP participants get a fantastic impression of London and England during the time they are in Britain to perform.

We start by securing great hotels, sourcing quality meals and, of course, providing the greatest stages in the world on which to perform.

Then our brilliant team of vastly experienced itinerary planners and hosts come into play to create and deliver a stunning collection of tours, visits and opportunities that give, in a short time, a terrific overview and introduction to our long history, our rich culture and our diverse and welcoming population.

There are a wonderful array of motor coach tours with the best and most interesting guides in any city in the world. Our coaches are all 'state of the art' modern touring coaches (never call them buses – at least in the drivers' earshot!) with panoramic windows. Our coach operator carries \$ 15,000,000 of liability insurance so you are always safe and protected whilst you are on board.

Meet our chief guide who will tell you a little about his special Blue Badge qualification and about some of the tours that we provide for you.

Half day panoramic sightseeing tour of the West End and the City of London. The ideal introduction to our great City. See the Houses of Parliament with the Clock Tower that holds the bell of Big Ben, Buckingham Palace, Westminster Abbey, Whitehall, Downing Street, Trafalgar Square, Piccadilly Circus and the 'Theatreland' along Shaftesbury Avenue. Look in to Chinatown and Soho, see St. Paul's Cathedral, The Bank of England, Mansion House, and The Tower of London. All the time be entertained and informed by one of our specially selected guides.



SEEING LONDON AND ENGLAND, CONTINUED



A Half Day to [The Tower of London](#) and the [Crown Jewels](#). The Tower has served as a royal palace, fortress, prison, place of execution, mint, menagerie and jewel house during its 900 year history. Attractions in the Tower include the Bloody Tower, Traitors Gate, the Chapel of St. John and the Jewel House where the Crown Jewels of England are on show.



A Half Day tour to [Greenwich](#). The great River Thames that flows through the centre of London is the reason London, Britain's capital City, lies where it does. The Thames is a truly fascinating river and on this excursion to Greenwich you will travel in one direction from Westminster either to or from Greenwich. The history of the river will entrance you and the very special views of London's South and North Banks from your river boat will be spectacular and awe inspiring. In Greenwich you will visit [The Royal Observatory](#) with the Prime Meridian – the base line of all time around the globe. You will also visit the [National Maritime Museum](#). Being an island nation Britain's Maritime History is long and deeply impressive. The Royal Borough of Greenwich has a great and picturesque market and also has its modern side with the impressive O2 Arena and entertainment complex – one of the finest in Europe.



A Half Day tour of [Windsor](#) and [Windsor Castle](#). Twenty five miles to the west of London lies Windsor, whose 11th century castle is the seat and primary home of the British Royal family. Visit the castle with its State Apartments and Royal Chapel – the burial place of many of our monarchs. Spend time in the delightful town and look out at the vista of Britain's most famous public (private) school, Eton College – alma mater to so many British Prime Ministers and Royal Princes.

A Half day in [Oxford](#). Oxford is home to the oldest University in the English speaking world. On this tour you will visit one of the historic colleges that make up the University of Oxford. The buildings that house the colleges are simply superb and full of history. The City is an interesting mix of 'town and gown' with the academics and scholars of the University representing 'gown' and the thousands of skilled workers associated with

SEEING LONDON AND ENGLAND, CONTINUED

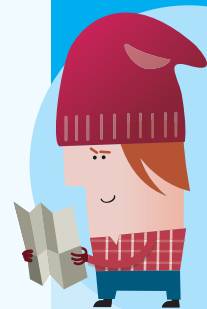


the BMW Mini plant representing much of the 'town'. It is always great fun in Oxford to look out for the sites and scenes used in the famous British TV series 'Morse', which was all set in and around Oxford.

A half day at Hampton Court Palace. This superb Tudor Palace located on the banks of the Thames in the London Borough of Richmond was originally built by Henry VIII's Chancellor, Cardinal Thomas Wolsey. Wolsey fell from favour – not least because he had built himself a Palace better than the king's and so Henry requisitioned it and it became a Royal Palace which it remains to this day. A visit to the Palace includes visits to the State Apartments with their magnificent art collections, a tour of the splendidly restored Tudor kitchens (Henry and his court were notorious for their gluttony), a look at the earliest Real (Royal) Tennis Court and the chance to lose yourselves in the famous Maze.

Every programme includes five out of these six special tours/visits. London Panoramic, The Tower, Greenwich, and Windsor we think are best included for all. Then you should choose between Oxford and Hampton Court for your fifth visit.

For those who have taken part previously in LNYDP and have been offered a subsequent invitation we have alternative tours/visits to offer. Remember though that whilst it might be a director's second or third time around (or maybe more) it should always be borne in mind that usually group members get just the one bite of the cherry. Thus we recommend choosing from the above.



LNYPD EXCLUSIVE AUDIO GUIDED WALKS



Listen to Tyler Butterworth tell you about these wonderful walks.

London is one of the greatest 'walking' cities in the world. At the heart of London in the City of Westminster, in the 'Square Mile' City of London and in the historic boroughs of Southwark, Greenwich, Tower Hamlets and Lambeth there is something unique, arresting and fascinating around just about every corner, in every nook and cranny, and in every historic narrow alley way and mews.

LNYPD thinks it really important to show its very special visitors to London the very best that London has to offer and to give a perspective of London than can really only be achieved on foot.

So we commissioned the very best. We asked the famous radio actor and historian Tyler Butterworth if he would write and perform for us a series of unique walks showing the very best and most interesting parts of London to our performers and visitors.

All Tyler's walks, produced exclusively for LNYPD, are presented on easy to use MP4 players equipped with headphones, a charger (and adaptor) and accompanied by printed materials to help the tours keep on track. These 'keep and take home' players are a fabulous educational tool and should make the LNYPD programme worthy of a history credit!

As Tyler said we now have a total of nine tremendous tours. All of the twohour walks will be downloaded to every MP4 player with one given to every participant.

We will work with group leaders and directors to include three walks in every itinerary and then we invite all of our LNYPD guests to choose which of the other tours they would like to take in their free time.

Get a taste of each walk by clicking on the links below:

The London New Year's Day Parade Route – great history and stories, and logistically very helpful to LNYPD performers.

Princes, Palaces and Power – walk shoulder to shoulder through Westminster with 1,000 years of Royalty.

London's Fabulous Theatreland – Covent Garden, Piccadilly Circus and more.

The South Bank – a walk from the London Eye to Southwark Cathedral and The Borough Market. Historic Southwark to 21st century Southwark in one walk.

Guide and Seek – we give you the clues, you tell us what you find.

LNYPD EXCLUSIVE AUDIO GUIDED WALKS, CONTINUED



Murder Mystery and Mayhem in Old London – with Jack the Ripper and many more grisly stories to unfold.

London, Rock and Roll Capital of the World – exploring the history of the Swinging Sixties, Glam Rock, Punk Rock, Brit Pop and much more.

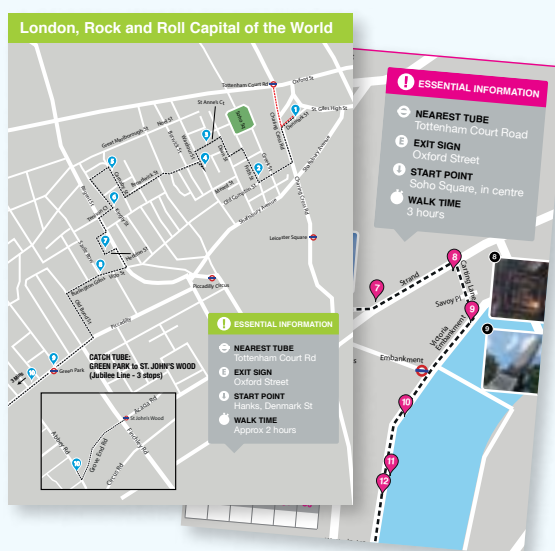
Harry Potter's London – see for real all of the London sites that are so evocatively written about in J K Rowling's Harry Potter Series.

UK-USA Hotspots – see and hear about our selection of UK-USA Hotspots, interesting places in London with significant links to the USA.



As well as the two hour walks Tyler has also produced a series of special short tracks highlighting places and building associated with the great and intertwining history of the UK and the USA.

To make it easy to get from walk to walk and to help you get around in your unstructured time we provide you with the ultimate ticket to London's extensive and very sophisticated public transit system – operated by Transport of London for TfL.



THE TFL OYSTER CARD



This is your passport to London. A terrific prepaid travel card for all of London's excellent public transport systems.

The card can be used on:

- The London Underground (Tube)
- London Buses – all those famous red double deckers and more besides
- The London 'Overground' Railway System (within certain limits)
- The Docklands Light Railway
- The Emirates Air Line Cable Car

Click [here](#) to find out more about the extensive travel opportunities for you in London on your Oyster Card.

It's so easy to use your Oyster. Touch on and off at tube, DLR and overground station barriers. Touch when you get on a bus – no need when you get off.

We have put an amount of value on your card that will cover all of your itinerary activities. If you look like you are running out of value simply top up your card at any station – quick easy and simple.

Find out all about the [Oyster Card](#).

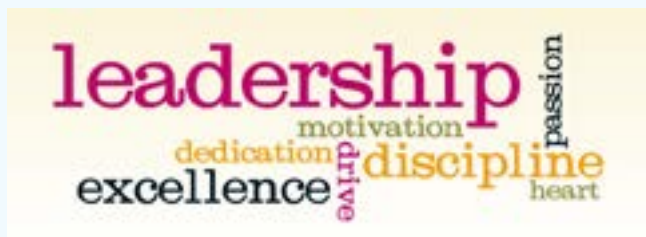


DR. TIM LAUTZENHEISER



LNYP is proud and honoured to be supported by Dr Tim Lautzenheiser.

Dr Tim is in London for every New Year's Day Parade and offers a series of his brilliant, highly acclaimed, unique and life enhancing seminars to all musical performers from the USA taking take part in LNYP.



NEW YEAR'S EVE



It's time to party – but not till too late as you'll be taking part in the greatest show on earth the following day – and there may well be an early morning call for performers in LNYDP!

But we do throw a great party to welcome in the New Year.

- A private room is reserved at the hotel for you and all the other groups of performers staying in your hotel.
- The room will be prepared for the party by the hotel's tour assistants – you are always welcome to help out.
- We provide glow bands, balloons and party poppers to help the evening go with a bang!
- A top rated disco and light show will be provide with a terrific playlist of just about anything you can think of – give your tour assistant advance notice and your favourite tracks can be ready to go – or you can request on the evening
- We provide pizza and sodas to boost the calories you shed with the dancing
- All parties are 100% secure, free of alcohol, and exclusive to LNYDP performers.





LNYPD'S UNIQUE SERVICE



We have been doing this a long time and have developed what we consider to be the very best team of professionals to ensure that your programme in the UK to take part in LNYPD is as good as it can possibly be.

A little earlier we took a look at the great DEL team who organise LNYPD and your London hospitality arrangements. If you want to refresh your memory just click [here](#).

Likewise you are in really good hands with the Youth Music/Performance Travel teams in the USA and UK. Again if you want a reminder of who they all are just click [here](#).

So you have great people taking care of you but what else makes our service so special?

- **Our Group Organiser's Guide.** An absolutely invaluable manual detailing out every step of the way of how we need you to prepare for your group's participation in LNYPD. This guide is delivered to you electronically in the early part of the year that you travel. Regular updates are sent as modifications and improvements are made.
- **Summer site inspection.** It is imperative that every group is represented by its leader/s on a fixed date Summer Site inspection programme in London. On this site inspection there are a series of seminars, meetings, venue tours, Parade route walks and hotel tours that prepare you for leading your group at the end of the year.
- **Virtual site inspection.** After site section we provide you with a copy of a digital Power Point presentation covering everything that has been discussed and shown to you in London, but in a way that can be presented to your group.
- The Ace up our sleeve is our team of **Tour Assistants**. Each group will be allocated one. Your Tour Assistant will have been carefully trained and will be an ever present resource of organisation information and friendship whilst you are in London – '24/7', from the moment you arrive in London until the time you leave. During site inspection we will secure from you the profile of the type of person you want, and then we will make our staff allocation in November and have your allocated Tour Assistant contact you in December to introduce him or herself and see what they can do to help you in your last minute preparations. Our Tour Assistants are terrific people, none less than 21 and none more than 29 years of age. All University educated and all with a deep knowledge and passion for London and LNYPD.

IMPORTANT EXTRAS



For performers:

- All performers in LNYDP are presented with a specially struck medal to acknowledge their contribution to the greatest event in the greatest city in the world. You can only get a medal if you take part – they are highly sought after.
- Every performer will receive a 10" x 8" photo of the band on New Year's Day in a special LNYDP mount.

LNYDP truly welcomes family members, friends, alumni and supporters of all performing groups and offers them the same arrangements as for performers. So we are delighted to offer the following to all categories of non performer in every group as a little extra.

- A complimentary concert ticket to each and every concert that their group performs in.
- Priority access and a discount on the highly sought after LNYDP grandstand tickets. Tickets go on sale to the general public on 01st October each year and sell out within hours, but you will have access (as a group) on 01st September. A whopping discount of 50% is offered provided the tickets are ordered as a group through the LNYDP London office. Payment will be through Youth Music as a supplement to the group billing. Grandstand tickets ordered after 1st October cannot be guaranteed and the discount is no longer available.

SECURITY AND PEACE OF MIND



A comprehensive travel insurance policy is included for everyone on every performance tour programme to LNYDP.

Coverage includes:

- cancellation
- medical and emergency expenses
- personal accident
- baggage
- delayed baggage
- musical instruments
- rental or replacement musical instrument

This protects the vast majority of the performance tour cost should you be forced to cancel for a significant number of reasons.



WHERE DO YOU GO FROM HERE?

Youth Music's (YM) Directors of International Participation, along with their Consultant are constantly scouring the Americas for groups we would like to invite to take part in LNYDP and the Festival.

If you are contacted by a member of the YM team and are interested in going a step further then Youth Music will ask LNYDP to put your name before the steering committee for approval. If you secure this approval then the LNYDP will write to you to tell you that you have been accepted for invitation.

You will then enter into negotiations with YM who will produce for you a document entitled 'Offer of Performance Tour'. This encapsulates your discussion with YM, listing out the dates that you would travel and the gateway you would travel from,

the number of places we can offer you, an exact listing of performance, hospitality and educational touring features, and a cost and a payment schedule. The final page of this document requests that you secure signatures from all relevant parties that you may accept the offer.

Once accepted the Offer Document is returned to Youth Music/Performance Travel who then create a contract based on the contents of the Offer. Once you have signed and returned the contract you will then be contacted by LNYDP to set up a date for the presentation of the official invitation. This will be undertaken during a visit to your group in the USA by one of the Senior or Principal Patrons of LNYDP. You are not invited, and the contract is not valid if you do not receive the official invitational visit.





LNYDP
LONDON'S NEW
YEAR'S DAY PARADE





LNYDP
LONDON'S NEW
YEAR'S DAY PARADE
★ AND FESTIVAL ★



Destination Events
No 1 Turnham Green Terrace Mews
Chiswick, London W4 1QU
Tel: 020 3275 0190
email: info@lnydp.com
www.lnydp.com